



# The Cove Fire Pit

Installation Instructions for CV-30

1-800-940-0295



# IMPORTANT

Please consult your Crystal Fire Burner Owner's instruction manual for detailed instructions and important information related to hooking up your burner, including safety information, proper tightening of connections with two wrenches, and full burner setup and lighting instructions.

**DO NOT ATTEMPT TO INSTALL CF-30 BURNER WITHOUT FIRST CONSULTING THE CRYSTAL FIRE BURNER OWNER'S MANUAL.**

## Contents

Required Tools.....	3
Included with your Fire Pit.....	4
Assembly Instructions.....	5
Igniter Installation.....	6
Gas Connections.....	6
Glass Installation.....	9

## Required Tools



- **Three people are required for this installation.**



- **2 Open Ended Wrenches**

To secure gas connections.



- **Leather Gloves**

To protect hands from rough edges found on fire pit during installation.



- **One AAA Battery (not included)**

Required for electric spark igniter installation.



- **Utility Knife**

To cut and remove packaging.



- **Power Drill**

To remove support board from crate.

# Included with your Fire Pit

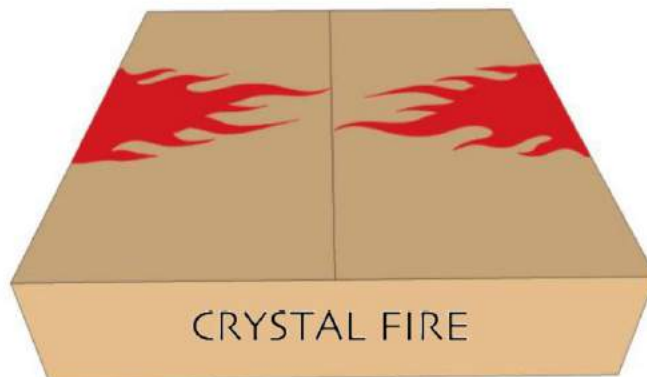


**No 110V  
required**

CV-BASE with Key Valve  
Control Panel



Key for Key  
Valve

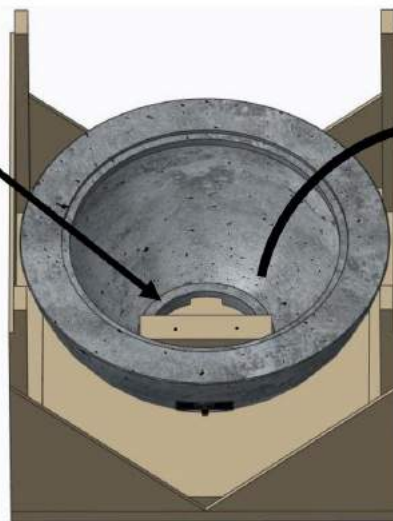


Crystal Fire CF-30 Burner Kit

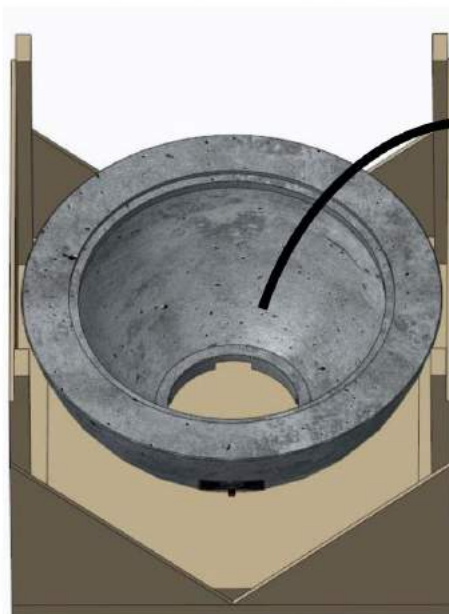
# Assembly Instructions

1. First, unscrew the shipping block with a power drill. Discard board. It will not be needed for further assembly of this product.
2. Remove fire pit base from the crate you received it in. Place the base in your desired location. Three people are recommended for this step of the installation.

Shipping Block



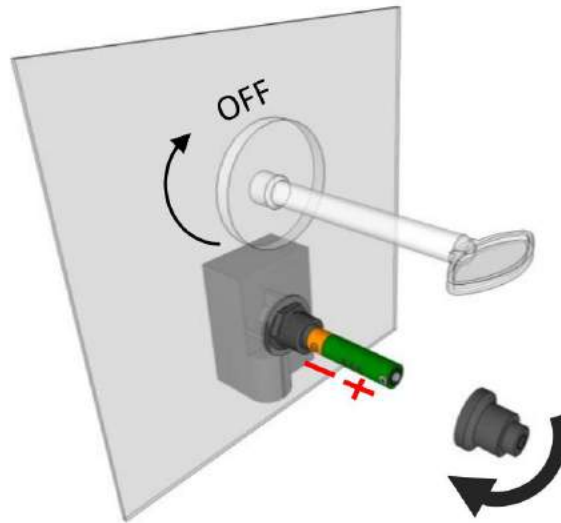
1



2

# Igniter Installation

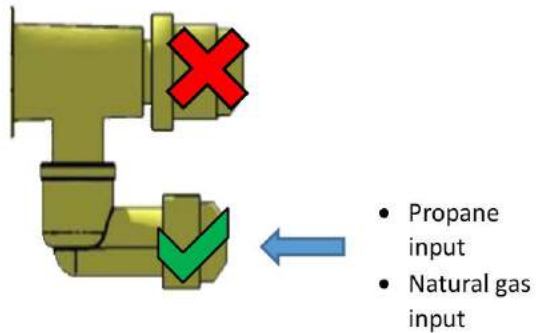
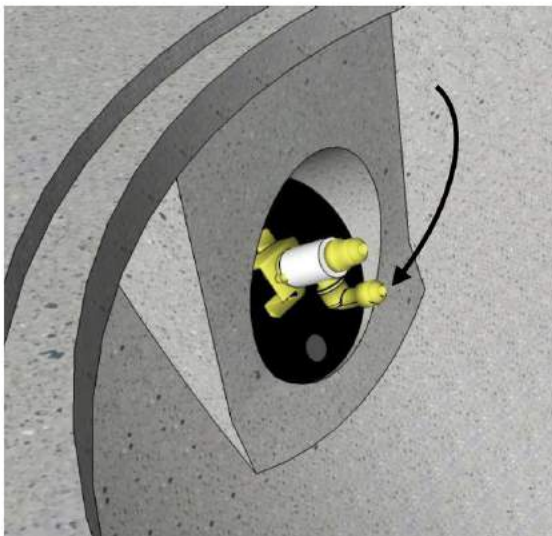
1. Make sure the valve is in the OFF position before beginning.
2. Remove sparker cap by turning counter-clockwise and insert a AAA battery (not included).



# Gas Connections

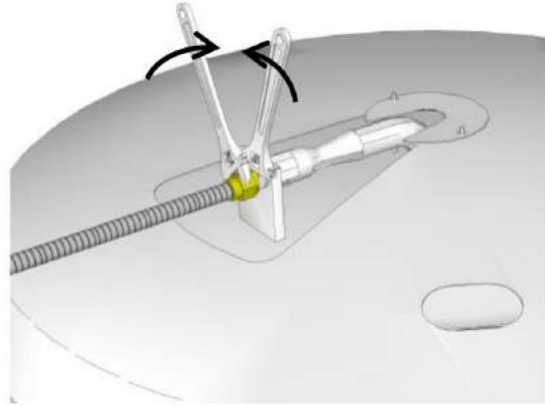
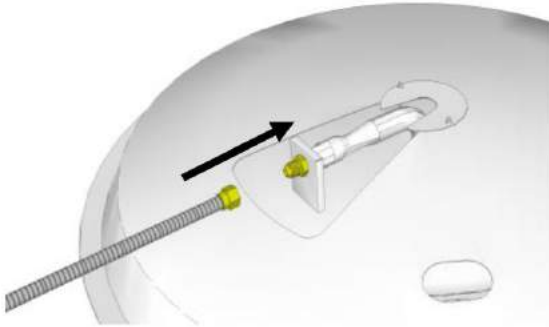
**Read and understand your Crystal Fire Burner Owner's manual before beginning burner hookups or using the device.**  
**Do not use Teflon tape or pipe dope on flare fittings.**

1. Reach inside the base and attach gas supply line to the input shown below, using a 3/8" flare fitting.

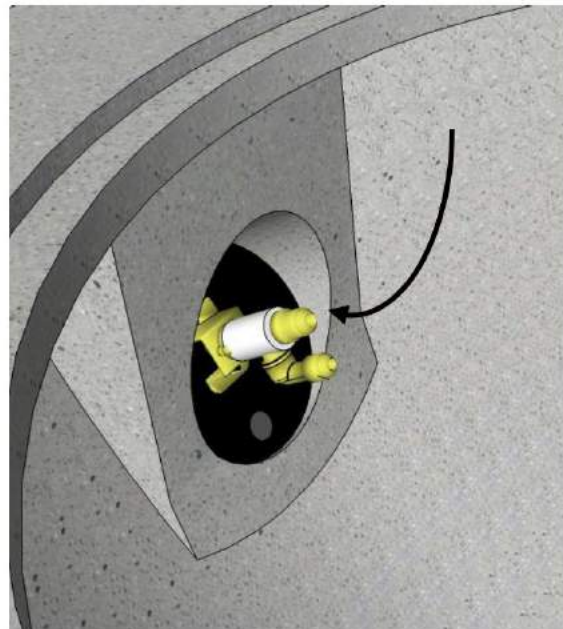
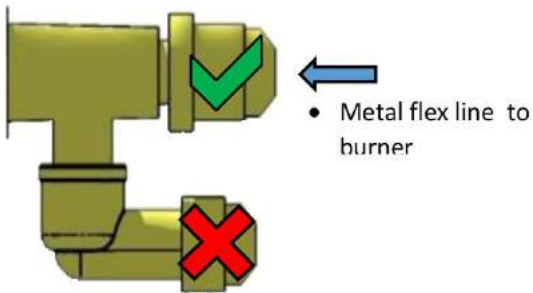


2. Ensure the correct orifices are installed for the fuel type you are using (see Crystal Fire Burner Owner's manual included with burner for orifice sizing information).

**TIGHTEN SECURELY WITH TWO WRENCHES**



3. Attach flex line from the burner to gas valve as shown below.

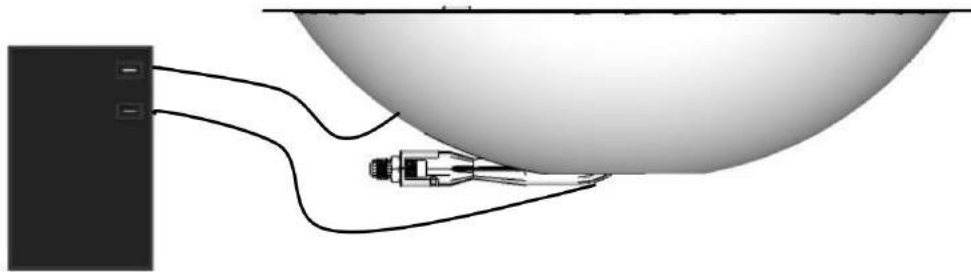


**TIGHTEN CONNECTION  
SECURELY WITH WRENCH**

# Igniter Installation (continued)

Sparker will not operate correctly without an ignition **and** ground wire attached.

- Plug both **BLACK** wires hanging from the burner into the back of the sparker box. If an orange wire is present, do not use it. The orange wire is for automatic ignition system add-on only.



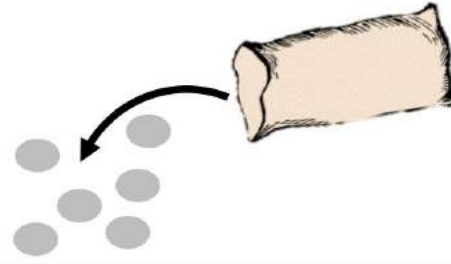
- Test system by pushing the button on the igniter. Consult the troubleshooting section of the Crystal Fire Burner Owner's Manual, if the spark is weak, intermittent, or not present.

Set burner into the fire pit base as shown below



# Glass Installation

1. Scatter all the included glass beads evenly onto burner surface.



**DO NOT OPERATE CRYSTAL FIRE BURNER WITHOUT INCLUDED  
GLASS BEADS**



## **IMPORTANT**

Please consult your Crystal Fire Burner Owner's instruction manual for detailed instructions and important information related to hooking up your burner, including safety information, proper tightening of connections with two wrenches, and full burner setup and lighting instructions.

**DO NOT ATTEMPT TO INSTALL CF-30 BURNER WITHOUT FIRST CONSULTING THE CRYSTAL FIRE BURNER OWNER'S MANUAL.**

## **WARNING**

After consulting the manual and following instructions, remember; before operating, all gas connections must be fully checked for leaks

## FEATURES

30" Stainless steel round burner inside super-cast concrete bowl

Contemporary raw concrete finish is unique to each fire bowl,  
common attributes include pitting and color density variation

Optional lava rock & glass guard sold separately

UL Listed.

Made in USA.

## SPECIFICATIONS

- Key valve control panel
- Push button start with flame control height
- 110,000 BTU burner
- No 110V required
- Battery operated (1-AAA battery)
- Stainless steel CSA/UL Burner
- Clear fire beads - standard
- Dimensions: 42W x 42D x 19H in.
- Net Weight 265 lbs
- Flame height = 18 to 24 inches
- Connects to 20 lb. LP tank or to Natural Gas
- Made from durable Supercast Concrete
- Ships to Continental USA and Canada in rugged wood crate
- Approved for residential, commercial or institutional outdoor use
- One year manufacturer's warranty

### Options

- 30R wind glass guard - 5 pc with stainless clips
- Heavy duty elasticized canvas cover
- Colour glass fire beads - please specify
- Black lava fire rock
- Circular glass burner cover in light gray

**Warranty:** Fire pit tables are covered under a 1-year manufacturer's warranty. Please visit <http://www.outdoorrooms.com/warranty-form/> to register your product.



[www.RealstoneGraniteProducts.com](http://www.RealstoneGraniteProducts.com)

1-800-940-0295

USA

2014 Holland Avenue  
Port Huron, MI 48060

Canada

720 Proudfoot Lane,  
London, ON N6H 5G5

Beautiful | Durable | Economical

Please consider the environment before printing this email.